

CERTIFICATE OF LOCATION OF GOVERNMENT CORNER

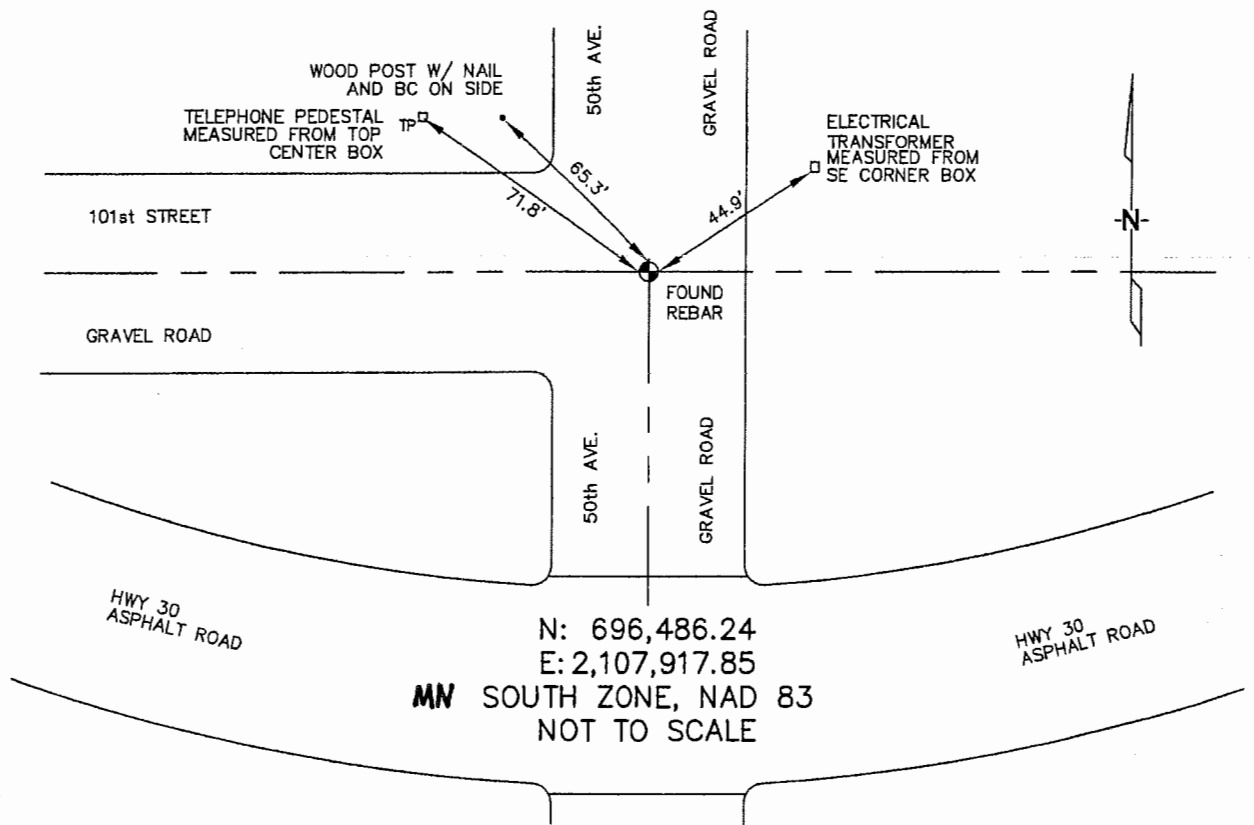
NORTHWEST Corner of Section 13, Township 106, Range 43, 5TH P.M.

STATE OF MINNESOTA, County of MURRAY

At the corner location shown on the sketch :

- On 3/22/2006 found A REBAR IN THE C/L OF GRAVEL ROAD.
- left monument as found, lowered monument, removed monument (explain)
- On _____ set _____

Sketch of reference ties



Statement of evidence relative to this corner location is on back page

I hereby certify that this document and the data contained herein was prepared by me or under my direct supervision.

Thomas V. Zeff
 Thomas V. Zeff
 Date 6/27/06

Registration No. 44563

- Land Surveyor, Professional Engineer
- County Surveyor, County Engineer

OFFICE OF THE COUNTY RECORDER

County of _____

SEP 28 2006

I hereby certify that this document was filed in the Co. Recorders office at _____ M. on the _____ day of _____ A.D., 20

County Recorder James V. Johnson
 By _____, Deputy

DOCUMENT NO. _____

STATEMENT OF EVIDENCE:

NORTHWEST CORNER, SECTION 13, T. 106 N., R. 43 W.,
MURRAY COUNTY, MINNESOTA

- 1866 J.W. Bishop, US. Deputy Surveyor, monumented corner.
- ???? Murray Co., found a stone at 1/4 corner; placed a steel pin above stone.
Ties: NE-44.9' to corner of fence post;
W/NW-55.6' to telephone pole.
- 3/22/2006 Uiteig Engineers, Inc., Survey Crew, Brian Payne Party Chief, found a rebar in the C/L of 50th Avenue, gravel.
Ties: NE-44.9' to SW corner of an electrical transformer box;
NW-71.8' to top, center of a telephone pedestal;
NW-65.3' to nail & bottle cap on E face of wood post.